

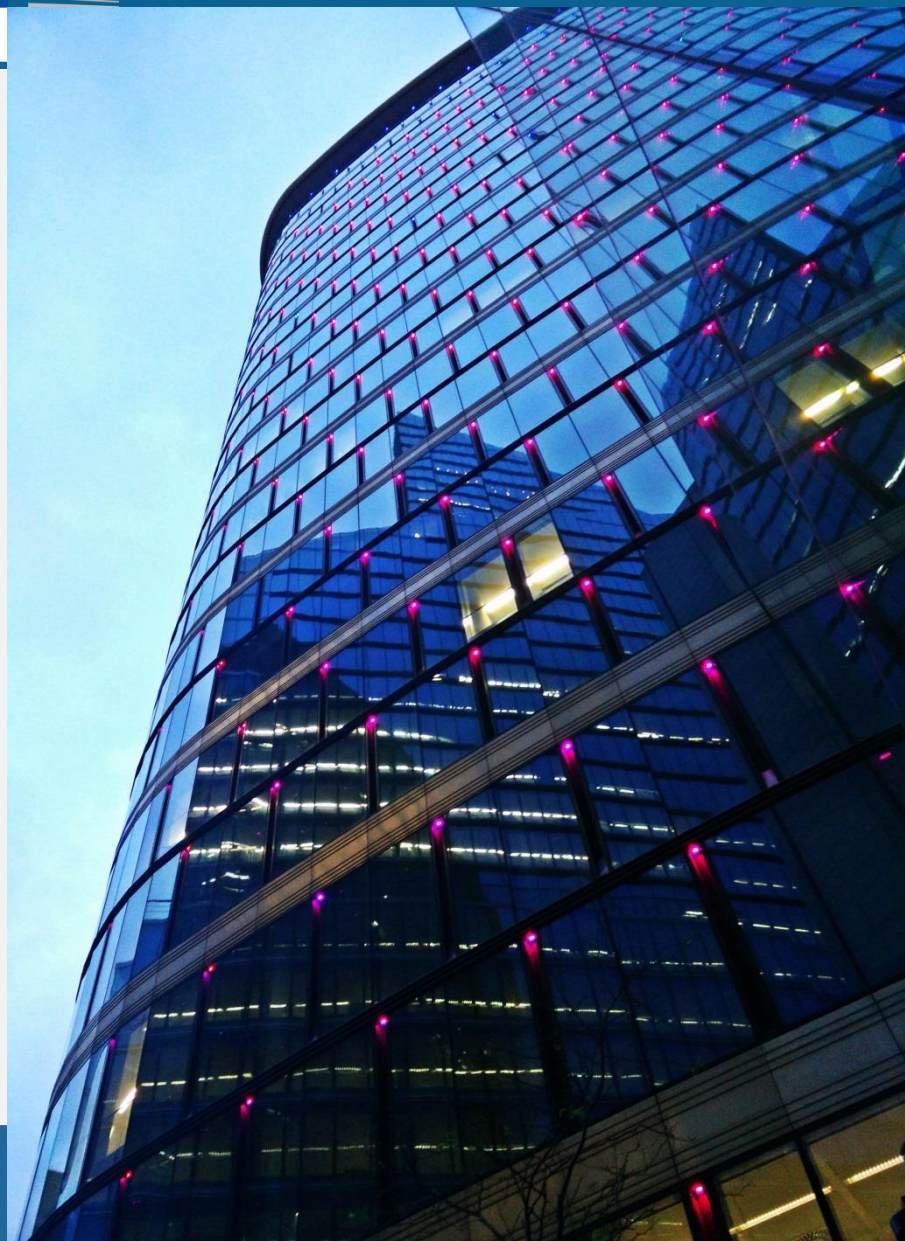
# EASME

Executive Agency for Small and Medium-sized Enterprises

## **Synergies for the circular economy: Key messages for SCREEN**

Mr Arnoldas Milukas  
Head of Unit / B2 –  
Environment and Resources

*SCREEN Project Meeting  
16-17.3.2017 / Rome, Italy*



## EASME's role within the European Commission

- Managing EU programmes
- Feeding into the policy-making process, **led by DGs**, with project outcome & success stories

**SCREEN is a coordination and support action intended to provide policy feedback to EC who are tasked with developing EU policies and framework programmes**





European  
Commission

# EASME

Executive Agency for Small  
and Medium-sized Enterprises

The EASME manages programmes  
on behalf of the European Commission,  
turning EU policies into action.

Fast Track to Innovation (FTI)

COSME the EU programme  
for the Competitiveness of SMEs

Horizon 2020 Innovation  
in SMEs actions

€ 7 M<sup>+</sup>

Horizon 2020  
SME Instrument  
@H2020SME

Horizon 2020  
Energy Efficiency  
@H2020EE

EU Sustainable  
Energy Week  
(EUSEW)  
@euenergyweek

CIP Eco-innovation

LIFE the EU Programme for the  
Environment and Climate Action  
@LIFE\_Programme

Horizon 2020 Climate action,  
resource efficiency and raw materials

@EU\_ecoinno

€ 2.7 bn\*

Sustainable Industry  
Low Carbon II (SILC II)

Intelligent Energy Europe (IEE)

The European Maritime and  
Fisheries Fund (EMFF)

Executive  
Agency  
for SMEs

<http://ec.europa.eu/easme>

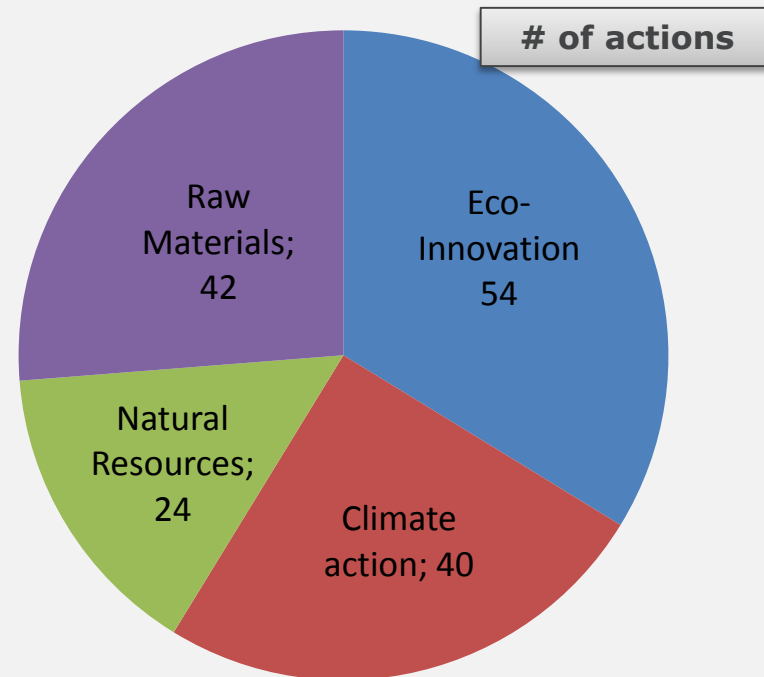
## EASME UNIT B2 (2014-2016)

- **The Unit is organised in Sectors:**

- Eco-Innovation
- Climate Action
- Natural Resources
- Raw Materials

- **Projects portfolio:**

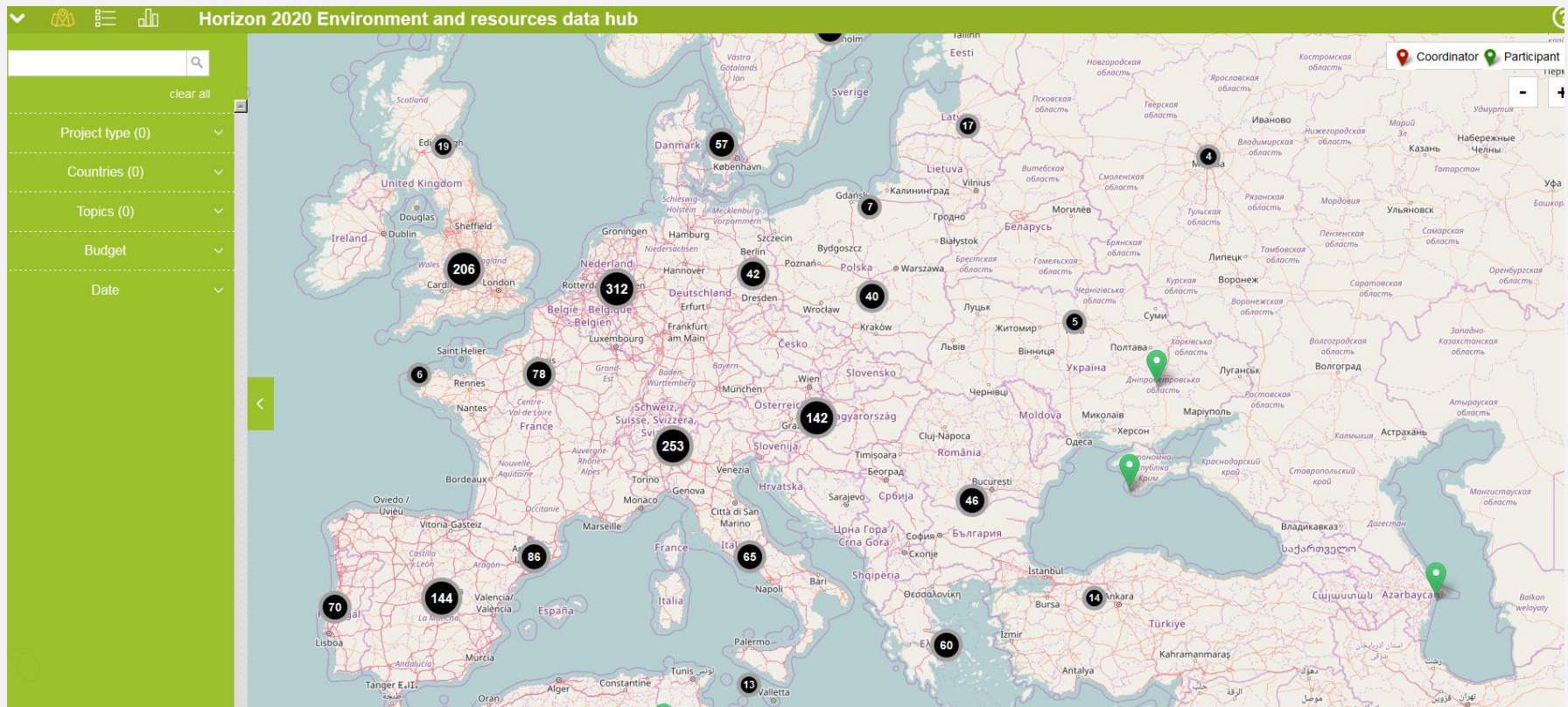
- 160 projects
- €942,682,297 EC contribution





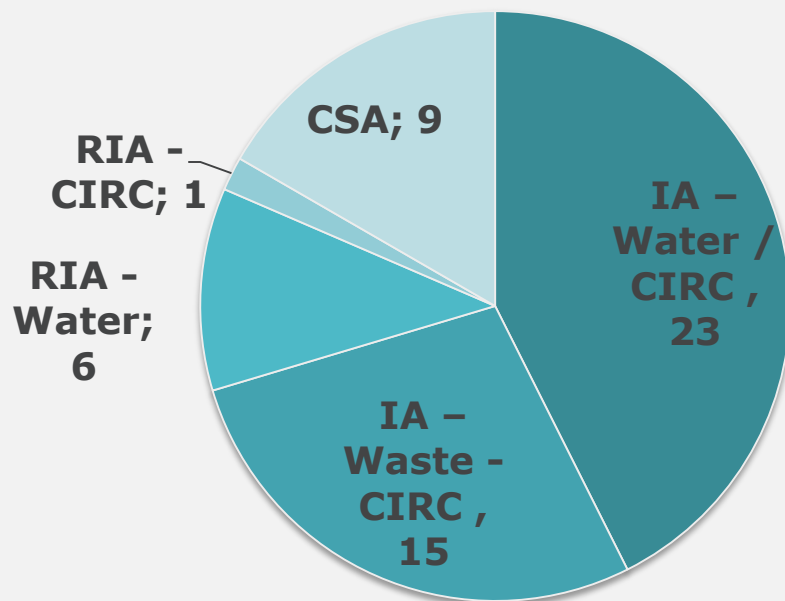
# EASME Data Hub

## Societal Challenge 'Climate action, environment, resource efficiency & raw materials'

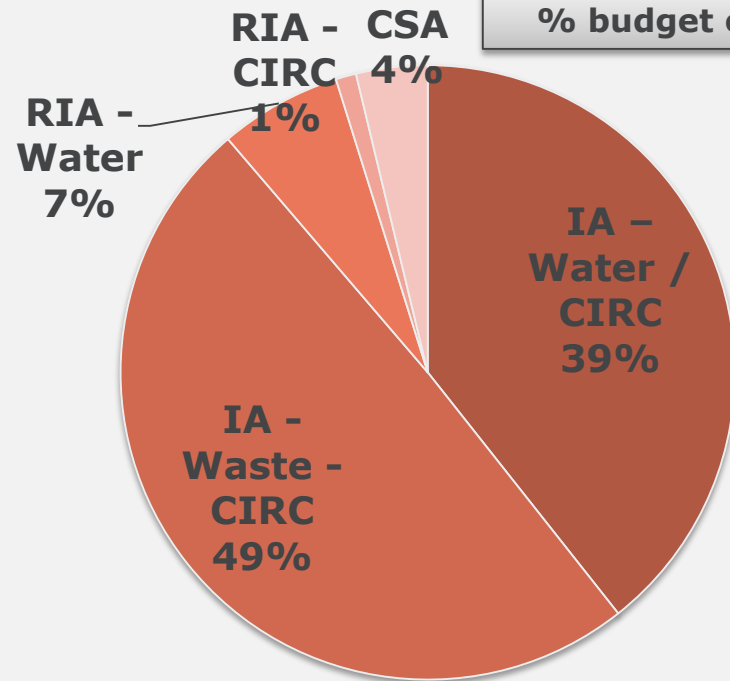


# Overview of project portfolio (2014-2016)

# of actions



% budget of actions



**Total:** 54 actions  
**Total budget:** €280M

## **H2020-CIRC-3-2016: Smart Specialisation for systemic eco-innovation/circular economy**

**Type of instrument: CSA**

### **Expected impacts:**

- identification of concrete sectors or areas with high potential to support a transition to a circular economy
- investment needs per region and sector/area to enhance existing S3 of involved regions;
- operational actions to connect the activities of the identified sectors/areas of involved regions in view of trans-national cooperation along relevant value chains;
- development of policy support advisory services

## SCREEN -> Key messages (1/2)

- Proposals should be **evidence-based** on the **analyses** and **collaborations done in the project**
- A **range of different options** should be discussed and analysed by the participating regions and relevant stakeholders
- Pros, cons, feasibility should be considered
- **Well elaborated** proposals with **clear roles**



## SCREEN -> Key messages (2/2)

- In line with the **strategic orientations for H2020**
  - Simplification
  - Maximise impacts
- Adhere to **EU principles**:
  - EU added value
  - Subsidiarity
  - Effectiveness and efficiency of EU funding



**Policy Lab**



# EASME

Executive Agency for Small and Medium-sized Enterprises

## **THANK YOU FOR YOUR ATTENTION**

EASME H2020 SC5

[EASME-H2020-SC5-ENQUIRIES@ec.europa.eu](mailto:EASME-H2020-SC5-ENQUIRIES@ec.europa.eu)

EASME on Twitter



@EU\_ECOINNO

Executive  
Agency for  
SMEs